



BANGLADESH IT INSTITUTE

To Help People Learn and Earn

Consultancy

Higher Education

Call Centre

ICT Training

Data Processing

Back Office Support

Software Solution

Security System



BUSINESS PROFILE

CONFIDENTIALITY

©Bangladesh IT Institute (BITI), all rights reserved. Except as permitted by law no part of this document may be reproduced in any form or by any means, electronic or otherwise, without the prior written consent of Bangladesh IT Institute. The information contained in this document is subject to change without notice.

*To the extent permitted by law, Bangladesh IT Institute does not guarantee or warrant the accuracy, completeness, currency, merchantability or fitness for purpose of the information provided and it is not and should not be regarded as professional advice. To the extent permitted by law, **BITI** expressly disclaims all liability and responsibility to any person (under contract, statute, negligence or otherwise) arising in any way out of this document or use of it or failure to use it.*

Confidential

This document is confidential and is given to you in confidence. You may only use the information it contains for the purpose it was provided. Access must be restricted to your employees and professional advisers who need access for the specified purpose. You must not otherwise disclose or use the information it contains except as required by law or where that information has lawfully become public knowledge.



ABOUT BANGLADESH IT INSTITUTE (BITI)



BACKGROUND OF THE ORGANIZATION & CAPACITY

BANGLADESH IT INSTITUTE

Bangladesh IT institute (BITI) has been supporting clients nationwide in managing the evolving role of information technology in business. As a strategic business partner, we provide IT Training, Diversified IT solutions and services that support attainment of our clients' business objectives. Our services and solutions include custom application software development, network infrastructure building, home & office security system installation, delivery and installation of PCs, Servers, and POS.

We combine the best of technologies, processes, strategies, and our extensive industry experience to enable our clients to succeed. BITI designs, implements, and supports end-to-end IT solutions and services. Our goal is to improve performance, maximize IT investments, and, ultimately, create a competitive business advantage for our customers. Our ability to integrate Information Technology services into a flexible, total single-point-of-contact (SPOC) solution is the key element of our success. Partnerships with some of the world's "best-in-class" corporations provide BITI with unique expertise and experience in providing diversified Information Technology solutions, including Information Technology consulting and systems integration.

HISTORY OF BANGLADESH IT INSTITUTE

BITI, in its journey of innovation in Information Technologies, has achieved strong footprint in many industries such as Real Estate, Bank, Microfinance, Health, Distribution and Retail.

Today BITI is considered the largest IT Solution Provider of Bangladesh and has become an IT partner of Choice for managing People, Process and Environment. Continuous thrust for improving quality is the reason behind its success. BITI has now a core competent team of matured skill personnel.

STRENGTH OF BITI

BITI offers IT Training, end-to-end Consulting, IT Solutions and Services to help organizations architect and build their businesses in the global economy.

Research and Development in cutting edge technology, software tools foundry at BITI Research Development and Design Center. BITI also has research alliances with several world- renowned technology companies like Microsoft, Oracle & Dell.

CONSULTANCY

A group of IT professional forms the backbone of the BITI mission, many come from the best universities and institutions in Bangladesh and from abroad. At BITI, technology specialists and business management experts share expertise to gain a thorough insight into the client's business, and look for innovative ways to apply technology for lasting solutions.

ALLIANCES

BITI increases the diversity of its offerings through strategic alliances and joint ventures with global leaders in technology and e-Business, such as DELL, CISCO, Microsoft, Oracle to name a few.



OUR VISION

To be model of excellence as an IT solution company with people who are committed to provide value for our customer and service to our community.

MISSION

To understand our customer's business and technology issues and to resolve the same with our experience in and commitment to varied range of platforms and products and with dedication to stay current with reliable and proven technologies to:

- ☑ Maximize the Value of Our Customers
- ☑ Develop a Highly Motivated Workforce
- ☑ Digitalization of Bangladesh to gain higher efficiency

Head Office & Corporate Address

15, Anowar Mansion (4th & 5th Floor)
6-Kha, Road-01, Mirpur-10
Dhaka 1216, Bangladesh

Landline	:	88 02 58052503-4
Cell Phone	:	88 01701 29 22 61-63
Email	:	info@ bditinstitute.com
Web site	:	www.bditinstitute.com www.bitisolution.com www.bitibd.org
FB	:	www.facebook.com/bditinstitute.bd www.facebook.com/athe
Linkedin	:	www.linkedin.com/company/bitibd
Twitter	:	www.twitter.com/BdITInstitute

USA Office:

21118, Sweetwater Ln. N. Boca Raton,
Florida 33428, USA
Telephone: +1 833 994 5622



GENERAL INFORMATION OF THE ORGANIZATION

01.	Name of the Organization	:	BANGLADESH IT INSTITUTE
02.	Nature of the Organization	:	IT Service Provider Consultancy Call Centre Data Processing UK Standard Higher Education Software Development Training Pearson VUE (Authorized Test Centre) Security System Provider
03.	Registered Office Address	:	15, Anowar Mansion (4th & 5th Floor) 6-Kha, Road-01, Mirpur-10 Dhaka 1216, Bangladesh
04.	Company Establishment Date	:	11 th Jan, 2012
05.	Operation Start Date	:	1 st Mar, 2012
06.	Name of the Signing Authority	:	A. M. Mohibur Rahman
07.	Designation	:	Chief Executive Officer
08.	E-mail Address	:	mohib@bdiinstitute.com
09.	Contact Person	:	Md. Khaled Hossain
10.	Contact Person's Designation	:	Manager
11.	Contact Details	:	+880 1701 292263
12.	E-mail Address	:	info@bdiinstitute.com , khaled.bdi@gmail.com
13.	Web site Address:	:	www.bdiinstitute.com , www.bitibd.org
14.	Office Space	:	9000 Sft.
15.	Computer Lab	:	07 (340 Sft. Each)
16.	Internet Connectivity	:	50 mbps + 50 mbps (from 2 different ISP)



LEGAL STATUS & REGISTRATION

Sl. No.	Registration Authority	Registration Number	Date of Registration
01.	Joint Stock Companies and Firms	37289	11 th Feb, 2015
02.	Dhaka North City Corporation	04-20571	11 th Mar, 2015
03.	Bangladesh Telecommunication Regulatory Commission	14.32.0000.007.57.402.17.199	1 st Aug, 2017
04.	Bangladesh Association of Call Center & Outsourcing (BACCO)	BACCO/00101/BITI/2017	1 st Oct, 2017
05.	Bangladesh Association of Software & Information Services (BASIS)	G927	17 th Jan, 2018
06.	Bangladesh Computer Samity (BCS)	2230	21 st July 2019

TIN & VAT REGISTRATION INFORMATION

Description	Registration Number	Registration Authority
Taxpayers' Identification Number (TIN)	217125505532	National Board of Revenue (NBR).
Business Identification Number (BIN)	000670995	National Board of Revenue (NBR).

OUR BANKING PARTNERS

Sl. No.	Bank	Branch
01.	Dutch Bangla Bank Limited	Mirpur Circle 10 Branch
02.	Prime Bank Limited	Rokeya Sharani Branch
03.	Mercantile Bank Limited	Mirpur Circle 10 Branch
04.	Exim Bank Limited	Mirpur Circle 10 Branch

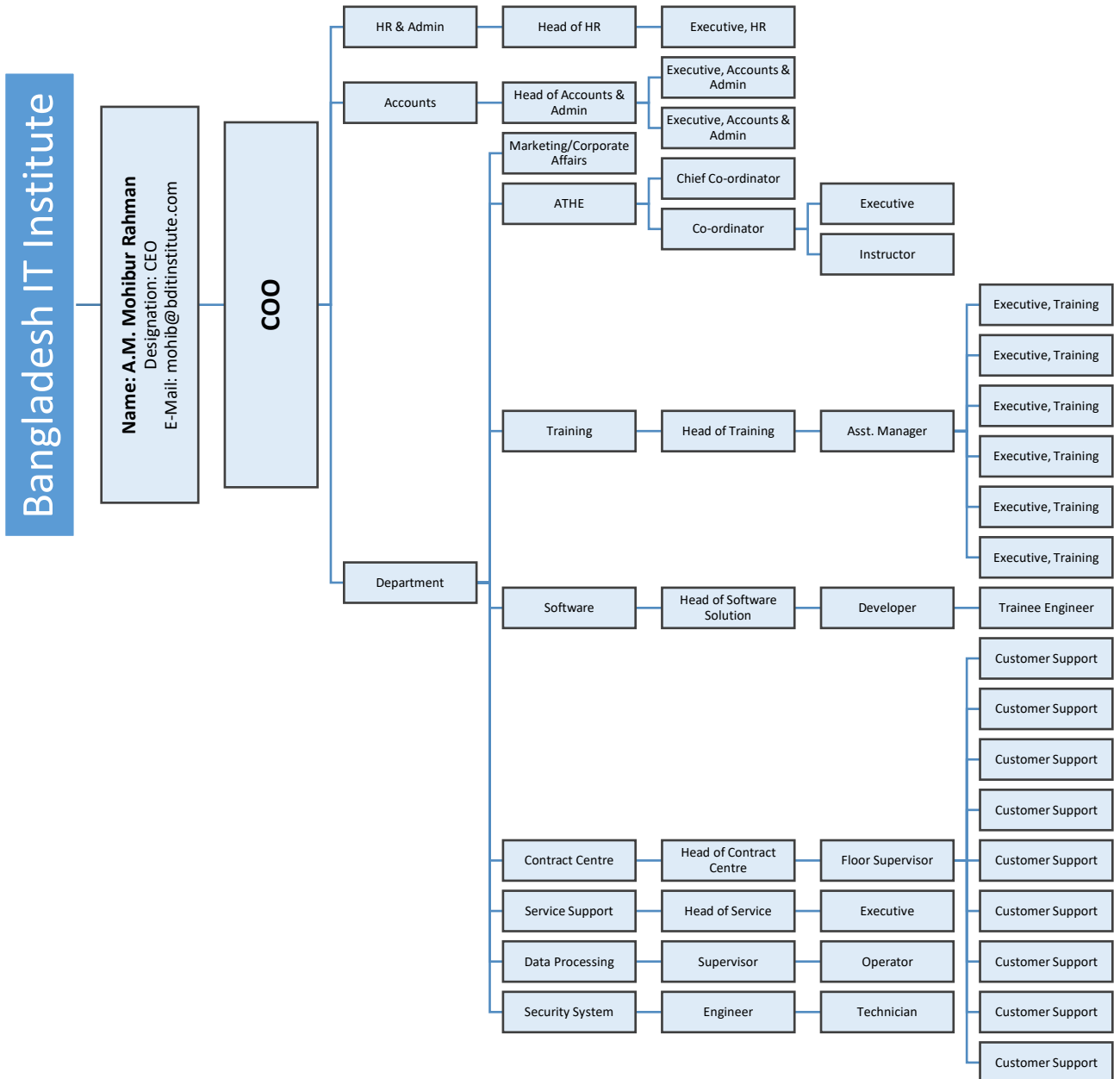
OUR LEGAL ADVISOR

Nowroj & Associates
Tax Consultant
 8/3 Shegun Bagicha (2nd Floor)
 Dhaka 1000

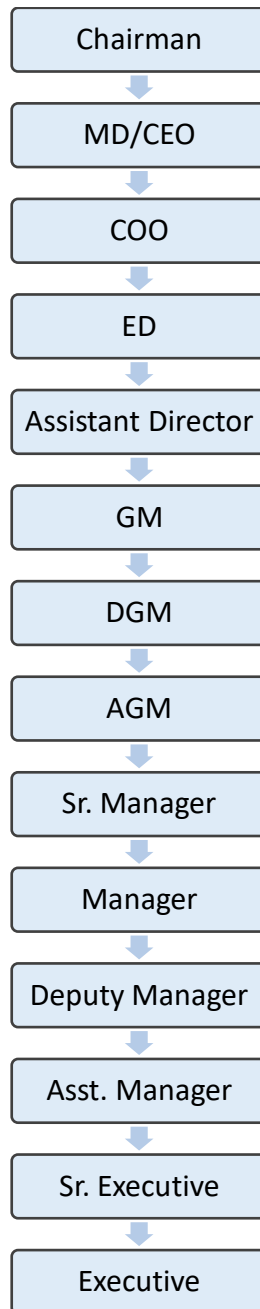


ORGANIZATIONAL STRUCTURE

ORGANOGRAM OF BANGLADESH IT INSTITUTE



OPERATIONAL HIERARCHY





HUMAN RESOURCE OF BITI

Category		Quantity
Software Engineers	:	10
Apps & Games Developer	:	07
Graphics Designer	:	03
Trainer/Instructor	:	30
Hardware & Network Engineers	:	05
Finance & Administration Personnel	:	11
Support & Maintenance	:	07
Marketing Personnel	:	05
Call Centre Agent	:	75
Data Entry Operator	:	250
Office Staff	:	06



MOVABLE AND IMMOVABLE ASSETS

Sl. No.	Name of the Asset	Quantity
01	Server	2
02	Computer & Laptop	260
03	Router	7
04	24 port Switch	10
05	Biometric Fingerprint	2
06	Projector	10
07	Printer	6
08	Scanner	45
09	UPS	85
10	Internet Modem	10
11	Mouse	275
12	Keyboard	280
13	Headphone	55
14	CC Camera	16
15	Multi plug (Extension plug)	120
16	White Board	17
16	Notice Board	3
18	Calculator	4
19	PABX System	1
20	Telephone Set	18
21	PLC Board	1
22	Networking Accessories	12
23	Air Cooler	25
24	Fan	35
25	Fire Extinguishers	8
26	Generator (Fujian Yihua) 30 KVA	1
27	Sofa Set	12
28	Executive Table	25
29	Executive Chair	75
30	Table	320



Sl. No.	Name of the Asset	Quantity
31	Chair	350
32	Wall Clock	10
33	Glass Door & Thai Decoration	10
34	Circuit Breaker	20
35	Collapsible Gate	6
36	Curtain	85
37	Electric DB Board	4
38	File Cabinet	18
39	Water Filter Machine	1
40	Water Purifier (R O) System	2
41	Electrical Material & Wages	1
42	Signboard (Inside)	6
43	Signboard Outside	3
44	Wages	1



HR POLICY of BITI

We know that exceptional experiences begin with extraordinary people. We employ the leading experts, and technology innovators and proven integrators. We empower our employees to become a committed team, and a talented developer community to create experiences that matter.

It is, therefore, the mission of the company to offer our employees an entrepreneurial work environment in which excellence, team work, open communication, innovation, respect and personal growth are encouraged.

Equal Opportunity Practices

Bangladesh IT Institute (BITI) is committed to provide a working environment free from unlawful discrimination and to foster a company culture founded upon the fundamental dignity of all of its members. It does not discriminate against or permit harassment of employees or applicants for employment on the basis of race, color, gender (including gender identity and expression), religion, and national origin.

Recruitment

In general all administrative positions, including senior and executive level positions, must be posted through the Companies Career Page and different Job Portals and keep them posted for a month to the least.

Selection

As part of BITI's commitment to equal employment opportunity and affirmative action, the company has an established Administrative Hiring Process for all applicants. BITI hires, develops and retains the best employee for every job. It takes steps to identify and encourage highly qualified applicants to apply for jobs and try to make the hiring process as clear and easy as possible for applicants and managers.

Training & Development

BITI offers Induction Training, Administrative and Skill Development Training, training on different technology for our human resources regularly.

In addition BITI arranges special training programs as per project need and technology demand. We also encourage our Staffs to participate on different workshops that BITI thinks necessary and adds value to the company and most importantly bears all the expenses related to the workshop.

Performance Management/Review Management

BITI has a review system which gets conducted yearly. Promotion and pay rise are offered in accordance with the result of the review.

Benefits

BITI offers its employees market competitive wages, Festival bonus, Project bonus, Provident fund, Group-Insurance, Medical Benefits, House Rents, Travel Allowance, Daily Allowance, Telephone Allowance, Yearly Leave, Maternity & Paternity Leave, Marriage Leave, Entertainment including Birthday and Occasional Parties, Etc.

Freedom of Association and Collective Bargaining

BITI involves its entire stakes in the decision making process which relates the respective stakes. Administrative decisions are taken followed by a round table meeting of its employees. Scheduled meetings and instant meetings are called up before taking decisions that relates our employees.



HEALTH & SAFETY ENVIRONMENT (HSE) POLICY

Purpose

At Bangladesh IT Institute (BITI), safety is everyone's responsibility. All members of the institute are expected to be thoroughly familiar with their safety responsibilities, strive to follow safety practices at all times, act proactively to prevent accidents and injuries, communicate hazards to supervisors, and be prepared for emergencies that may occur in the workplace.

This Health and Safety Policy reaffirms the institute's commitment to safety and good environmental stewardship and establishes a uniform.

Policy

BITI strives to maintain a safe living, learning, and working environment. Faculty, staff, learners, and other members of the BITI community must conduct institution operations in compliance with applicable local regulations, institution policies and requirements.

Responsible Parties

- ☒ Faculty, Principal, Investigators, Supervisors, and Safety Representatives
- ☒ Employees and Students

Arrangement

To provide health care support to the learners and staffs, BITI has separate First Aid team, rescue team and firefighting team. BITI preserves a completely equipped first aid box emergency. BITI ensures proper hygiene and cleanliness in each part of office with special attention in the fresh room.



CORPORATE SOCIAL RESPONSIBILITY (CSR)

Since founded, Bangladesh IT Institute (BITI) has been committed to various Corporate Social Responsibility (CSR) programs and granting resources to carry them out.

Child Education

As a responsible organization we offer early childhood education to poor and destitute children. They are given books and all the supporting materials to continue their study up to a certain stage.

Women Empowerment

BITI gives special attention to empowering local girls and women in order to improve their social condition and make them economically independent. Several training programs are arranged often including domestic food products, candle, paper envelopes, stitching, tailoring and embroidery, mushroom cultivation, incense sticks preparation, fishery, and facilitating them to start their own enterprises for income generation.

Medical Treatment

We often raise funds both internally and externally to support the treatment expenses of patients of insolvent families suffering from serious diseases.

Internship Opportunity for Students

Those just finished their Graduations or still pursuing their degree and require work experience as part of their courses, have incredible opportunity to work at BITI. We offer three positions throughout the year for the Internship program in return of attractive remuneration whilst having the advantage and opportunity in the next recruitment process.

Natural Disaster

BITI takes initiative to stand next to the victims of any Natural Disaster through financial contribution, collecting and distributing food and drinking water straight among the victims. During the winter season BITI collects and distributes winter clothes, blankets to the poor of the society living in the street.

Environmental Responsibility

Considering our environmental-responsibility we do most of our paper work based communications electronically. Before printing anything we always ask ourselves: "Do I need a hard copy?" Also we have two ways of separating any disposals and office waste, recyclable and non-recyclable.





PARTNERSHIP AND AFFILIATION

	<p>Bangladesh Telecommunication Regulatory Commission (BTRC) an independent Regulatory Commission established under the Bangladesh Telecommunication Act, 2001, (Act no18 of 2001) published by the parliament in the Bangladesh Gazette extraordinary in new on April 16, 2001. BTRC started his journey from 31st January 2002 to conduct the activities of the said act. For more details please visit www.btrc.gov.bd</p>
	<p>Bangladesh Association of Software and Information Services (BASIS) is the national trade body for Software & IT Enabled Service industry of Bangladesh. Established in 1997, the association has been working with a vision of developing vibrant software & IT service industry in the country. Today the membership stands more than eleven hundred. Members of BASIS account for the lion share of the total software & IT services revenue of the country. For more details please visit www.basis.org.bd</p>
	<p>We represent the Business Process Outsourcing (BPO) and Call Centre industry in Bangladesh. We advocate and work with all stakeholders in this industry to create the right ecosystem; to grow this industry by 100,000+ of middle income sustainable jobs for our youths by 2021. For more details please visit www.bacco.org.bd</p>
	<p>Bangladesh Computer Samity (BCS) is the apex ICT business and trade industry association of Bangladesh. It represents the industry that comprises of distributors, dealers, resellers of computer and allied products, locally assembled computer vendors, software developers and exporters, internet service providers, ICT based educational institutions and training houses and other ICT enabled services providers. For more details please visit www.bcs.org.bd</p>
	<p>Awards for Training and Higher Education provides centres with a wide variety of qualifications including, but not limited to; administration management, business, tourism, law, computing and health and social care. We have made a name for ourselves with exceptional customer service, excellent quality standards and rewarding qualifications with progression routes to university degrees. For more details please visit www.athe.co.uk</p>
	<p>Each year millions of people around the world take an exam with Pearson VUE. Pearson VUE is headquartered in suburban Minneapolis, Minnesota, with regional offices in the USA, UK, Dubai, Australia, India, Japan and China. More than 450 credential owners across the globe choose Pearson VUE to help develop, manage, deliver and grow their testing programs. For more details please visit www.pearsonvue.com</p>
	<p>Islamic Development Bank-Bangladesh Islamic Solidarity Educational Wakf (IDB-BISEW) was established following an agreement between the Islamic Development Bank, Jeddah, Saudi Arabia, and the Government of Bangladesh. IDB-BISEW undertakes funding, formulating and implementing of projects in the areas of education, human resource development and institutional strengthening. The intent is to transform the large population into productive workforce by strengthening their technical capability. For more details please visit www.idb-bisew.org</p>



OUR BUSINESS ACTIVITIES

OUR SERVICES:



**BANGLADESH
IT INSTITUTE**
To Help People Learn and Earn

Training

01



Call Center

02



Exam Center

03



Security System

04



Data Processing

05



Software Solution

06



Higher Education

07



Consultancy

08



YouTube Channel

09



Digital Marketing

10



6-Kha, R-01, 15, Anowar Mansion (4th Floor), Mirpur-10, Dhaka-1216

www.bditinstitute.com





CALL CENTRE

Today, the world markets have matured to be highly industry, process and segment specific, and there has been a major shift from the initial days of business process services that was relatively simpler. Customers now expect business process services providers to deliver best-in-class operations, as well as the transformation needed in order to be the best in their respective industries. Now a day, BPO is not an option; it has become a necessity in today's competitive marketplace. 24x7 business environment needs innovative ideas and services, and has become key to customer retention and acquisition.

BITI offers a comprehensive set of services and solutions for Call Centre Operations which includes both training and offering a host of inbound and outbound calls for Domestic & International campaigns with high quality considerations. We have extensive experience of executing tele-sales, tele-customer support, tele-marketing and offshore recovery service projects coupled with call center trainings for various clients in public and private sector.

Every day, our clients entrust their customers and business to our bilingual (Bengali & English) employees, who engage in telephone and Internet contact, call center operations, information technologies and management, telecommunications, sales, customer service and marketing efforts.

Our Services

- ☑ In-depth, 24x7/ 365 customer service support
- ☑ Dispatch of service, emergency, or technical support personnel
- ☑ After hours, weekend, holiday, overflow coverage
- ☑ Dedicated receptionist during normal business hours
- ☑ Live operator answering service
- ☑ Message delivery answering service
- ☑ Toll-free telephone answering service
- ☑ Web Chat & email response

We Provide Clients With

- ☑ Higher quality telephone and web-based customer service and sales operations
- ☑ Lower base operating costs
- ☑ Maximum customer value

We Deliver Through

- ☑ Specialized computer telephony technologies
- ☑ Call center development experience
- ☑ Human Resources Management and process expertise



What We Offer

We offer our clients with courteous, professional, knowledgeable agents with crystal clear voice quality, customized answering with your personalized greeting and 24/7 nationwide telephone answering service

We enable our clients to meet their sales objectives by offering them quality services .Our program offerings include the following:

- ☑ Acquisition and Sales Program
- ☑ Back Office Processing

Acquisition and Sales Program

- ☑ Inbound Services (Customer Support)
- ☑ Outbound Sales& Support
- ☑ Order Taking and Fulfillment
- ☑ Lead Generation
- ☑ Product Information Requests
- ☑ Subscription Renewals

Back Office Processing

Our proven back office solutions include:

- ☑ Data Entry
- ☑ Transcription
- ☑ Research
- ☑ Analysis

INFRASTRUCTURE of Call Centre

When creating the facilities at BITI we spared no effort in building the most advanced call center possible. Taking into account the unique challenges faced by a call center in Bangladesh, we planned for every eventuality and provided the means necessary to handle them efficiently. With the latest high-end servers, cutting-edge customer management systems, advanced power management technology, redundant data storage and fully networked and internet ready Workstations; BITI's built on a solid foundation.



We Served Call Center Services for:

Domestic Client



রূপালী ব্যাংক পিএলসি.
উত্তম সেবার নিশ্চয়তা



PIONEER INSURANCE
COMPANY LIMITED

International Client



Global6 USA LLC



Europapower Global Ltd. & Co





DATA ENTRY, CAPTURE & DOCUMENT IMAGING

Bangladesh IT Institute (BITI) providing quality data entry services with its 5 years of experience, advanced management and techniques, skilled operators and strict quality control measures. It has a proven record of providing data entry services in the local market with its past and ongoing local projects, many of them from government agencies.

BITI is interested to work internationally, as a largest IT Training & Service Provider and data processing companies and would like to be a widely recognized as a leader in technology development and research.

Facilities and People

BITI is equipped with state-of-the-art scanners, high speed reliable servers, and hundreds of multi-tasking workstations housed in modern office buildings.

BITI currently has over 350 full-time employees including managers, marketing, customer services, technical support, administrative staff, and over 20 engineers and developers. All BITI operators undergo extensive technical, work ethics and operational skills training, and only qualified operators can work on production lines. BITI constantly upgrades its R&D team through skill and knowledge programs and the introduction of fresh members to keep BITI at the leading edge of technology.

Achievements

BITI has processed over hundred million characters in documents in different languages. It is capable of taking on just about any data processing job that exists. BITI has served and is still serving 10 of customer's local & International, many of them long-term and repeat customers. A few records that illustrate BITI's achievements include:

- ☑ Converting data between dozens of file and data formats
- ☑ Data Entry work for Banglalink, One of the leading Mobile operator in Bangladesh
- ☑ Data Entry, Data Processing & Data Cleaning work for Directorate of Primary Education (DPE), Peoples Republic of Bangladesh.
- ☑ Data Entry & Imaging of Rupali Bank Mobile Banking KYC
- ☑ Imaging, Data Entry & Validation of SureCash for Primary Education Stipend Project

Save Time, Space and Money

You don't have to reserve space for document storage, document processing equipment and personnel to utilize the Paper Free Service. BITI can process your work in the time that it would take you to demonstrate a positive return on investment or negate the impact of depreciation. Best of all, as a major imaging service provider and state of art document imaging equipment, BITI is uniquely positioned to offer the latest technology without passing along the costs of equipment and software upgrades.

Get the Service You Need, When You Need It

When your job requires barcode reading, sorting, OCR, ICR, OMR and audit trail scanning, you can count on BITI Document Imaging. Whether you require us for a onetime conversion, or regularly scheduled services or project-by-project basis, we offer the best imaging solution tailored to your need maintaining highest confidentiality and integrity of your documents.



Put Professionals and Award Winning Imaging Technology to Work for You

BITI accommodates all of your archiving and conversion needs without the expense of employee wages, benefits, worker's compensation, taxes and training. Our dedicated professionals are prepared and ready to serve you whenever needed. Kodak scanners are capable of scanning mixed documents and capture full 24 bit color, CCIT group 4 TIFF and/or 8 bit grayscale or bi-tonal images on a single pass. BITI puts professionals to process your documents, so you can focus on your core business. With partnership with ABBYY Software House BITI is capable of providing you the highest level of Form Processing services.

Why BITI?

When you can't justify the time, space and money associated with implementing a total scanning solution, BITI can help. Our Document imaging solutions offer high-quality scanning, form processing, and indexing services, which include document capture, conversion, indexing, archive and retrieval for a wide variety of applications in a broad range of formats. With both on-site and off-site options, BITI provides its customers with a total imaging solution to meet both immediate and long-term document processing needs.





ATHE (AWARDS FOR TRAINING & HIGHER EDUCATION)

Awards for Training and Higher Education (ATHE) is an awarding Centre and global provider of United Kingdom Higher Education and this qualification provides the opportunity to achieve British Higher Education by studying locally recognized partnership centre. ATHE provides the opportunity to earn Level-3 diploma certification which is equivalent to A- Level and H.S.C. After completing Level-3; you are eligible to start gradually Level-4, 5 and Final year Top-up programme. However, ATHE Level 4 & 5 Course carries 240 credits and most Universities will accept students for top up onto the final year of an Undergraduate Degree. ATHE Level-4 is equivalent to University 1st year, Level-5 is equivalent to University 2nd year and Level-6 or Top-Up is equivalent to University Final Year and besides you will get single certification for completing each Level. Now ATHE qualification is not only accepted in UK Universities but also USA, UAE & Asian Content.

ATHE Education is providing assessment and certification through recognized British qualifications throughout the world. We are regulated by the Office of Qualifications and Examinations Regulation (Ofqual) and have qualifications listed on the Regulated Qualifications Framework (RQF) in England. Now ATHE is offering three valuable subjects for the Bangladeshi students which are Computing, Business Management and Law.

Earning a Bachelor Degree or MBA is a simple and low cost with Bangladesh IT Institute. Earn your Extended Diploma programme and the top-up to a Bachelor or MBA degree by classroom based or on-campus through UK top ranking universities:

- ☑ Anglia Ruskin University
- ☑ Southampton Solent University
- ☑ University of Sunderland London Campus
- ☑ Northampton University
- ☑ Coventry University
- ☑ Cardiff Metropolitan University
- ☑ University of Bolton
- ☑ University of Bedfordshire
- ☑ Prince Edward Island University

Why Choose ATHE

- ☑ Obtain a globally recognized British degree in Bangladesh
- ☑ Offering time & cost-effective, fast-track courses leading to accredited qualifications including 'ATHE' extended diploma Level- 4, 5 and Bachelor programme.
- ☑ Recognized Centre - ATHE (Award for training and higher education)
- ☑ Flexible routes to graduation
- ☑ World class teaching faculty and modern campus facilities
- ☑ Part time job facilities during study period





SOFTWARE DEVELOPMENT

A clearly stated corporate mission, ably backed by total commitment of its staff, has made Bangladesh IT Institute (BITI) the NUMBER ONE software house of Bangladesh. BITI provides a wide range of business applications for all kinds of users starting from the smallest operation with one PC to a networked environment. Whether the user requires small household financial software, or a fully integrated real-time on-line microfinance application, or an ERP, with electronics interfaces, BITI is geared towards satisfying the customer needs fully and completely.

BITI success story is the outcome of its commitment to maintain a team of fully trained highly developed competent technical personnel who are required to update themselves on a continuous basis from home and abroad. Investment in training is one area where BITI refuses to cut corners.

Expertise in Operating System

BITI has been maintaining and supporting for years different variants of Windows Server that includes Windows Server 2000, Windows Server 2003/ Windows Server 2008/ Windows Server 2012. BITI also has a number of certified professionals on Microsoft platform, as a Microsoft Certified Gold Partner. Hardware and Software personnel are trained from home and abroad on the existing as well as new tools & products. The process of keeping the resources up to date with latest technology is in place.

Expertise in Development Tools and Languages

BITI maintains a highly skilled group of software professionals equipped with various technologies as follows:

Analysis & Design	: OOAD & UML Architecture/Framework: Client-Server, n-Tier & CSLA.NET Application Server: MS IIS, Oracle AIS & Apache
Languages/ Development Tools:	C#, VB.NET, VB6, ADO.NET, XML, Java, Oracle Developer & COBOL.
Web Technologies	: HTML, DHTML, PHP, ASP.NET, VBScript, JavaScript, JSP & XML
Component Technologies	: COM, DCOM, COM+, WINAPI, J2EE & EJB
Other Tools	: Crystal Reports, Visual UML, CodeSmith, VSS and VbExpress & NetAdvantage

Expertise in RDBMS

BITI has a proven expertise in relational database management system. The RDBMS includes Oracle, Informix, Microsoft SQL Server, and MySQL. The software professionals are trained on database administration and tuning of these products.

Project Management and Process Management

For software project management BITI follows Agile Methodology. BITI has certified project managers to manage project professionally.

In-House Training Facilities

BITI maintains an in-house Training Center where regular classes are held for its own staffs. Whenever a person acquires knowledge about any new product, it is transferred to others in the organization. The same facility, where all necessary equipment's are installed, is used to impart training to BITI customers.

Research and Development Lab

To keep the momentum of continuous thrust for exploring new era of technology BITI has quite a few R&D Labs which are specific to few products like Financial Software, ERP and solution like Cisco IPCC. Developing secured ISO 8583 messaging format for integration is one of the remarkable outcomes of R&D Lab.



SOFTWARE DESIGN AND DEVELOPMENT

- Banking management system software
- ERP software
- Education management software
- ISP billing software
- Account management software
- Online store management software
- Invoice software
- Inventory software
- Hospital management software
- Visitor Management

APP DESIGN AND DEVELOPMENT

- Experience Design
- Interface Design
- Mobile App Development
- Web App Development

WEBSITE DESIGN AND DEVELOPMENT

- Ecommerce website design and development
- Corporate website design and development
- WordPress theme design and development
- WordPress plugin design and development
- Website domain and hosting services
- FTP website design and development
- Social website design and development

BITI is mainly focused on providing solutions to its customers. Currently we are offering solutions in the following areas:

- ☑ IT Infrastructure Management,
- ☑ Intelligent Data Management, Consolidation, Data Protection, Data Achieve, Data Backup, Data Migration, Data Replication, Disaster recovery, High Availability
- ☑ Virtualization Technology
- ☑ Software & Application Management etc.

Services Offer to the Customer

- ☑ Web Based Application
- ☑ Desktop Application
- ☑ Database Application
- ☑ Custom Mobile Apps Development Services
- ☑ Product Development
- ☑ Application Migration
- ☑ Database Migration
- ☑ Content Management System





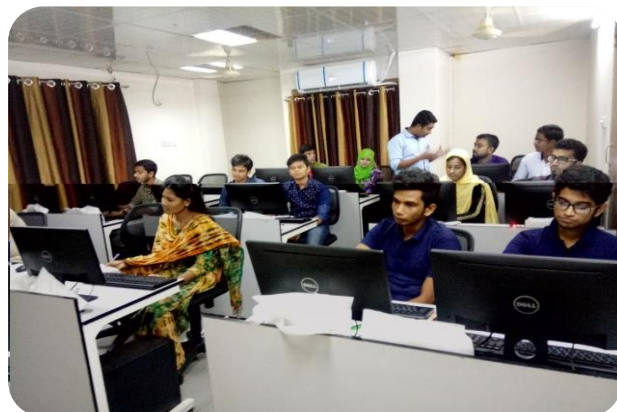
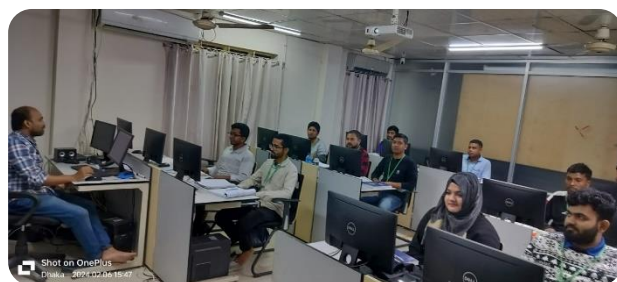
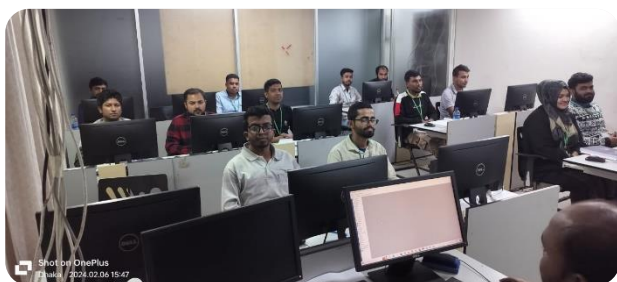
Our training courses have been designed on modular bases. Therefore, they are catered to different skill sets from basic to advanced applications. Job-oriented curriculum, project based training, role-plays, resume preps, real-time interview questions bank, full time lab access, individual attention, course completion certificate, aggressive and dedicated marketing team for quick placements, continuous help in upgrading marketable skills even after getting the job and lifetime on the job support, makes our courses different from other places in the market.

Our Regular Courses for Professionals

Foundation Level	<ul style="list-style-type: none"> • Microsoft Office Management 2013/2010/ Office 365 • Advanced Excel
Network Based	<ul style="list-style-type: none"> • A+ (Core Hardware & Operating Systems) • Network + (Data Communication System) • ISP Setup and Administration using MikroTik • CCNAX v2.0 – CCNA Routing & Switching • Professional Networking • Cisco Certified Network Professional (CCNP) • Cisco Certified Network Associate (CCNA) Security • CCNP with CCNA • ISP Setup and Administration using Linux • MCITP Enterprise admin on Windows Server 2008 • MCSA: Windows Server 2012 • Exchange Server 2010/2013
Web Based	<ul style="list-style-type: none"> • Web development using PHP with MySQL and WordPress • Web Development using ASP.Net with C#.Net • Web design and Animation • Search Engine Optimization (SEO) • Website Development using Joomla & Wordpress • Developing website Using CodeIgniter framework in PHP and Advanced Joomla with WordPress • Web Development using CakePHP, Wordpress, Zen-Cart & Elgg • Web Development using Laravel framework in PHP • Ruby on Rails • Magento • Drupal • JavaScript with jQuery, AngularJS, Node.JS and extJS
Graphics Based	<ul style="list-style-type: none"> • Graphics design and Animation • Video Editing
Application Development Based	<ul style="list-style-type: none"> • Object Oriented Programming using JAVA • C#.Net with Crystal Report • VB.Net with Crystal Report • J2EE (Java 2 Enterprise Edition) Programming • Android Application Development



Architectural Based	<ul style="list-style-type: none"> • AutoCad 2D and 3D / 3Ds Studio Max
Electronics Based	<ul style="list-style-type: none"> • Basic Electronics/ PLC / Microcontroller
Corporate	<ul style="list-style-type: none"> • CISA • ITIL • Windows Server Virtualization (Hyper V) • Core Solutions of Microsoft SharePoint Server 2013 • Advanced Solutions of Microsoft SharePoint Server 2013 • Microsoft Project Management • Microsoft Project Management for NGO • Right Based Approach and Project Management for NGOs • Cisco Certified Design Associate (CCDA). • CCNA Data Center /CCNA Service Provider • CCNA Service Provider Operations • Cisco Certified Design Professionals (CCDP) • CCNA & CCNP Security





AUTHORIZED TEST CENTRE



Pearson VUE offers innovative computer-based testing solutions through secure, electronic test delivery. **Pearson VUE** provides licensure and certification exams for Microsoft, Cisco, CompTIA, Oracle, HP, GMAC, NCLEX, FINRA, ASCP, DANB and many more.

Each year millions of people around the world take an exam with Pearson VUE. Pearson VUE is headquartered in suburban Minneapolis, Minnesota, with regional offices in the United States, the United Kingdom, Dubai, Australia, India, Japan and China. More than 450 credential owners across the globe choose Pearson VUE to help develop, manage, deliver and grow their testing programs. For more details please visit www.pearsonvue.com

Pearson VUE serves test owners and test takers in nearly every industry.

- ✓ Academia & Admissions
- ✓ Financial & related services
- ✓ Government
- ✓ Health Care
- ✓ Information Technology (IT)
- ✓ Military
- ✓ US Licensing & Global Regulatory



We are also Authorized Test Centre of :

- ✓ Independent Global Certification (Center Code: IGC18BAEC795)
- ✓ Beingcert LLC (Center ID: BTC1120)
- ✓ PSI Services LLC





As a new generation company with modern ideas and a philosophy of being the best rather than the largest integrator in the security industry, creating new solutions based on innovative ideas while utilizing the finest that technology has to offer, thereby, remaining the industry leaders in electronic security integration in Bangladesh.

Our commitment is the strategic design and seamless execution of innovative, state-of-the-art security systems delivered within budget and agreed timelines.

Bangladesh IT Institute (BITI) provides world -class and groundbreaking integrated solutions and has invested in its people and products to protect a variety of clients and the client's assets.

BITI have fully qualified personnel providing solutions to Bangladesh and one of the organizations to provide installation of integrated fire and security systems and has successfully completed projects for small, medium and large corporations. Our expertise in system integration is extensive and we believe that excellent service is the key to establishing and maintaining successful relationships between ourselves and our clients.

From consulting, design, planning through to integration, installation, and ongoing service, BITI provides state-of-the-art systems/solutions to the following markets:

- | | |
|---|--|
| <ul style="list-style-type: none"> ☑ Corporate Office / Building ☑ Departmental Store / Super Shop / Retailer Shop ☑ Jewelry / Electronics / Automobile / Other Showroom ☑ Residential House / Apartment Building | <ul style="list-style-type: none"> ☑ Bank / Healthcare ☑ Education (School, College, Polytechnic Institute) ☑ Amusement Park / Museum / Play Ground |
|---|--|

Our Services

- | | |
|--|--|
| <ul style="list-style-type: none"> ☑ Integrated Solutions ☑ Access Control ☑ Biometric Solutions ☑ Time & Attendance | <ul style="list-style-type: none"> ☑ Software Solution ☑ Metal Detection System ☑ CCTV, IP Video Solutions ☑ Fire Detection ☑ Security Alarm System |
|--|--|



DTP IN DESIGN SERVICE FOR PUBLISHING

Desktop Publishing team at DTP in design services is specialize in organizing pages, documents, images and files in custom formats before publishing. Apart from DTP services we are one of the leading graphics design service provider in Bangladesh offering powerful, creative and fast designing solutions for logo, banner, magazine design, layout design, newsletters, catalogs, package designs, labels, business advertisement and marketing material.

We are leading desktop publishing and graphics designing company with 9+ years of experience and expertise in serving global outsourcing needs at very competitive price.

Outsourcing DTP Projects to us will ensure creative, powerful and excellent desktop publishing solutions. We offer cost-effective Design Services on hourly and project basis.

We Create & Design:

- Magazines
- Companies Newsletters
- Catalogues and Brochures
- News Papers
- User Manuals
- Technical Documents
- Business Presentations
- User Manuals
- Pamphlets
- Business Advertisements
- Marketing Materials
- Layout & Creative Design
- eBooks & Educational Materials

For Industries:

- Automotive / Aero
- Retail
- E-Commerce
- Medical and Healthcare
- Marketing
- Print and Publishing
- Banking and Finance
- Media and Entertainment
- Transportation & Logistics
- Energy & Utilities
- Travel & Hospitality
- Construction / Real Estate
- Manufacturing

Services We Offer:

- DTP in design service for publishing
- Graphics Design Services
- Digital Publishing In design Solution
- Business Card
- Text formatting
- Creation and editing of technical copy
- Text Input into Pre-design File
- Flyers, Brochures, and Newsletters Creation
- Design graphic DTP layout templates
- Cross-platform DTP Design
- Modification of an design File
- DTP (layout) and manual conversion of pdf files into word files
- Catalogue and prepare print files
- Desktop publishing and typesetting
- Layout designing
- Multilingual desktop publishing



Features of Our DTP Services:

Our main focus is on putting the content, setting up the structure as needed (styles, masters) and applying the design styles (masters, paragraphs and character styles) to it. If needed retouching of text, graphs, tables, bulleted lists, table of contents, pagination etc. Our DTP and Graphic Design Services can be used to create the following.

Our Skill Set:

We use wide range of advance and legitimate software to deliver best desktop publishing solutions to our customers including Microsoft Word, PowerPoint, Adobe, Graphic Design, PDF, Photoshop, Page Maker, CorelDraw, Illustrator, Adobe Photoshop, Adobe Illustrator, Captivate, Premiere and Flash.

Benefits of Outsourcing DTP Services to Us:

- Compliance to usage of licensed software
- Skilled, trained and experienced DTP professionals
- Experts in Adobe, Quark Xpress
- Adherence to High Quality Publishing Standards
- Fast Turn Around time of 12 to 24 hours

Contact us to hire best DTP specialist / graphic designers for DTP and Designing requirements.

Featured Services

- | | |
|--------------------------|--------------------------|
| ✓ Graphics Design | ✓ Flyer Design |
| ✓ DTP Services | ✓ Catalogs Design |
| ✓ Magazine Layout Design | ✓ Package Design |
| ✓ Brochures Design | ✓ Restaurant Menu Design |
| ✓ Banners Design | ✓ Newsletter Design |





& DIGITAL MARKETING

Digital Marketing & Contents are the curtail elements in current technological era to reach people more effectively to expand the business. We always try to understand our customer's business & technological issues to resolve the same with our experience in varied range of platforms with dedication to stay current with reliable and proven expertise. We have an expert team for Digital Marketing & Content Development and they are already maintaining three (03) YouTube channels (Monetized) owned by BITI. It was really challenging to make contents (videos & animations) and relevant tasks for these three channels in same time where our team not only handle that but also got the Monetization (through google AdSense) within shortest time. We are trying to share knowledge about our own culture, history, enlighten people and also want to develop the language skill of general people.

Moreover, we are experienced in Animation & creative graphic design to handle our Client's channel, Social networking pages and Promotion. We ensure the excellence maintaining high information security for our clients with great infrastructure and proper reporting process to flourishing the growth in their business with reputation. A brief description is given below about our YouTube Channels.



Excellence Language Learning Hub

We believe language learning is the right of any person in the world. Excellence language Learning Hub (ELLH) started its journey to meet the demand of the people to learn the language from the smallest corner of the world. ELLH offers support to learn, teach and research of Modern Languages and Applied Languages. In this way, people become familiar with different cultures and get communicated to the world. We provide a large collection of English as a Second Language (ESL) tools & resources for students, teachers, learners and academics. Over two billion people in the world now speak this language. This figure is ever growing. It is the primary language used for most computers and for the inner workings of the Internet. Moreover, it is the dominant international language in communications, We do believe- One language opens a window; two languages open the door. What will happen if we know languages like Arabic, Bangla, Chinese, English, French, Hindi, Korean, Japanese, Spanish ...!?

<https://www.youtube.com/c/ExcellenceLanguageLearningHub>

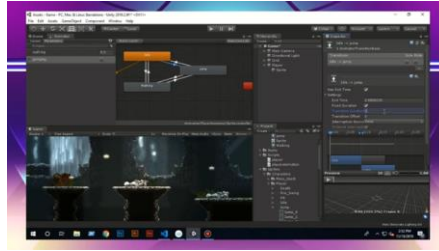
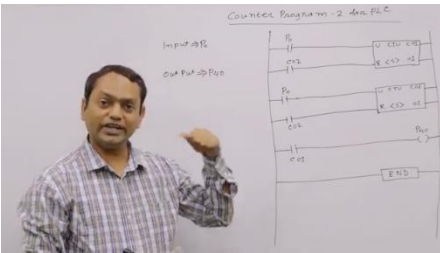




Knowledge Hub

Knowledge Hub is a journey to search for our amazing past, learn the true value of sparkling present, believe in the excellence & potentiality of our incredible future - and connect these three dots with the help of our ancestors, for our successors. We strive to offer more than just facts and figures & replication of news. We offer a mirror of light to inspire and enlighten our own selves through the remarkable success stories of Bangladeshis' in and abroad the geographical boundaries. We believe in free will, positive learning, skill development and above all to shape up as a compassionate human being, to become a integral part of the global community.

<https://www.youtube.com/c/KnowledgeHubbiti>



LAL-SOBUJ

সৃষ্টিগ্ন থেকে মানব সভ্যতার ইতিহাসে বাংলা ভূ-খণ্ড এক তাৎপর্যপূর্ণ অধ্যায়। আর্য সভ্যতা থেকে পারস্য সাম্রাজ্য, গ্রীক সভ্যতা থেকে মৌর্য সাম্রাজ্যের উত্থান, উপমহাদেশে ইসলামের বিকাশ, মুঘল সাম্রাজ্য সহ ইতিহাসের উল্লেখযোগ্য ঘটনাপ্রবাহে রয়েছে বাংলার সংশ্লিষ্টতা। একসময় বাংলার বুকে পা রাখল, ব্রিটিশ উপনিবেশিক শক্তি; ইতিহাসের পালাবদলে আমাদের কাঁধে চেপে বসল পাকিস্তানি হয়েনোগোষ্ঠী, একদিন আমরা ঘুরে দাঁড়ালাম – প্রতিবাদ করা শুরু করলাম – বহু ত্যাগের বিনিময়ে এল আমাদের পরম আকাংখিত স্বাধীনতা। মুক্তিযুদ্ধের হাজারো গল্প, সংগ্রাম, আত্মত্যাগ রয়ে গেছে অজানা। ইতিহাসের পাতা থেকে জানা-অজানা সেইসব গল্প; সাধারণ মানুষের অসাধারণ আত্মত্যাগের আখ্যান; হৃদয়ে রক্তক্ষরণ জাগানো সেইসব অধ্যায়গুলো তুলে এনে ডিজিটাল মাধ্যমে প্রকাশের লক্ষ্যে আমাদের এই অভিযাত্রা – নতুন প্রজন্মের জন্য আমাদের এই নিবেদন - সবাই আমন্ত্রিত; আসুন আমরা ইতিহাসের খেরোখাতার পাতায় পাতায় খুঁজি আমাদের দীপ্যমান অতীতের আলোকচ্ছটা!

<https://www.youtube.com/c/LALSOBUJ>



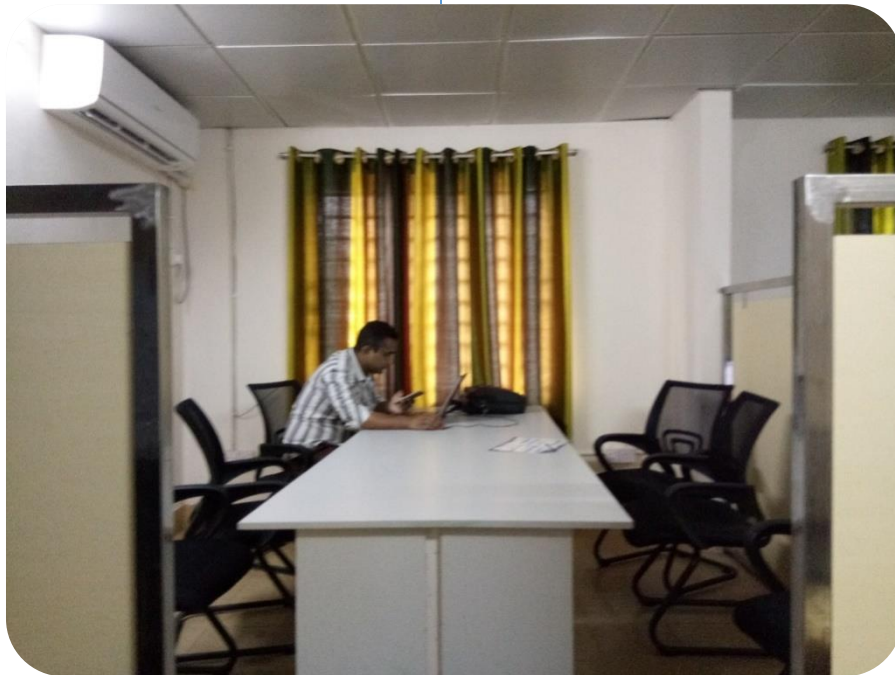
PICTORIAL VIEW OF BITI



Conference Room



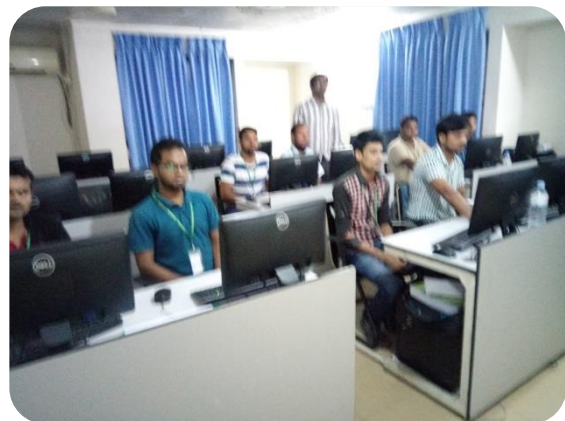
Programming Students in Lab



Faculty Room



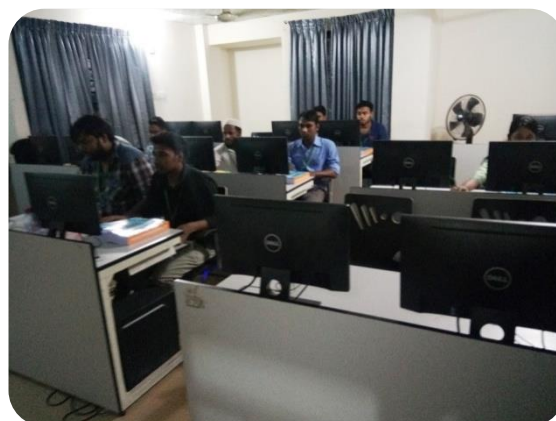
PLC Lab



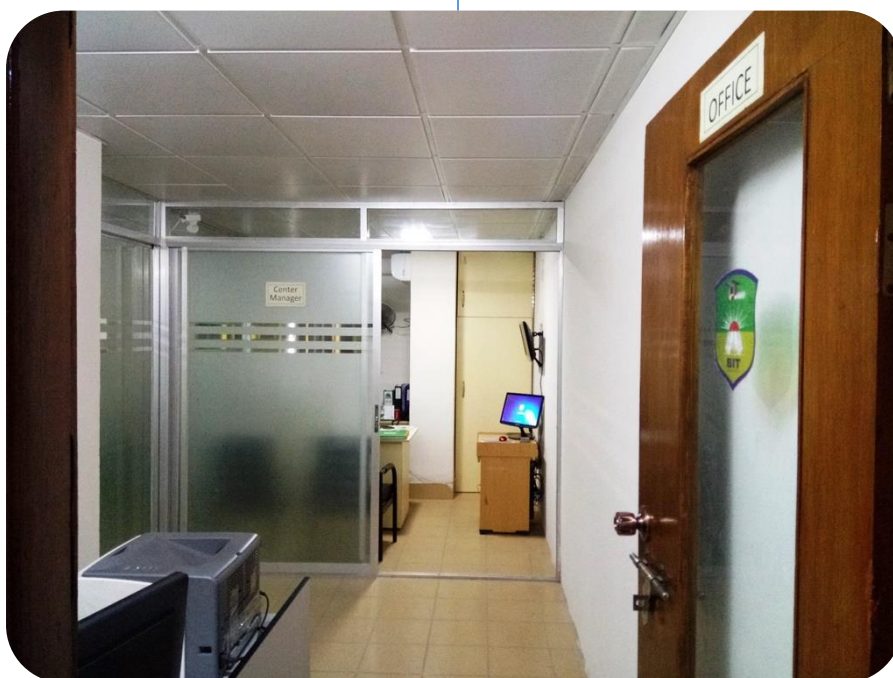
Networking Students in Lab



Graphics Design Students in Lab



AutoCAD Students in LAB



Centre Manager's Room



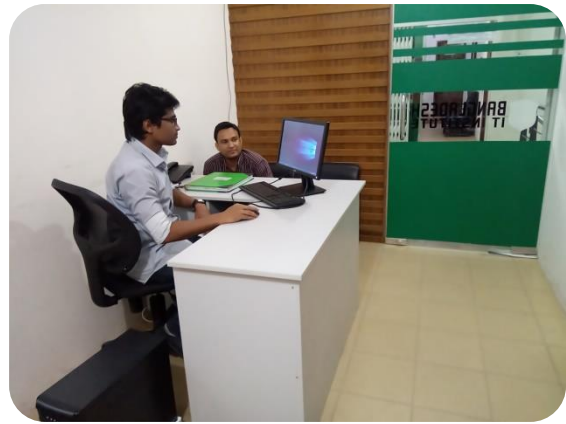
Counseling Desk



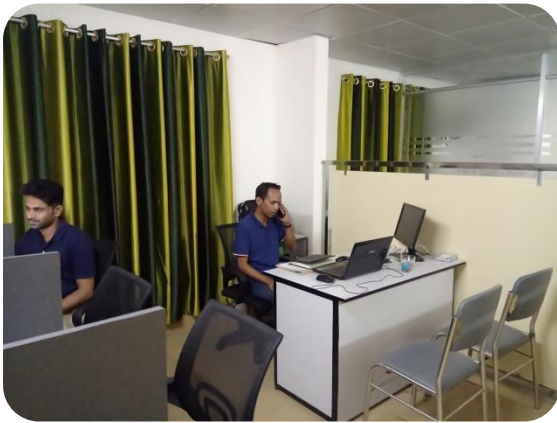
VUE Test Centre



Call Centre



Support Team



Software Team



Software Training Lab



Front Desk

OUR CLIENTS



IsDB-BISEW IT Scholarship



Directorate Primary Education



Rupali Bank Limited



SureCash (Mobile Banking)



Banglalink (Mobile Operator)



ICT Division



Ansar-VDP Unnayan Bank



Guardian Healthcare Ltd.



Department of ICT



She Power Project



Goethe University Frankfurt



Directorate General of Health Services (DGHS)



Sandhani Life Insurance Co.



Excel Academy



BD-ICU



Tech-Strait Corporation Ltd.



My Doctor



Pizza and More



Skill Development For Mobile Game And Application



Mobile Parts World (Belgium)



Bangladesh High-tech Park Authority



The World Bank, Bangladesh



Medi Fair



Bogura Polytechnic Institute



Rajshahi Mohila Polytechnic Institute



Khulna Mohila Polytechnic Institute



Rajshahi Polytechnic Institute



Khulna Polytechnic Institute





Rangpur Polytechnic Institute



Chapainawabganj Polytechnic Institute



Brahmanbaria Polytechnic Institute



Barguna Polytechnic Institute



Cox's Bazar Polytechnic Institute



Bhola Polytechnic Institute



Comilla Polytechnic Institute



Barisal Polytechnic Institute



Chandpur Polytechnic Institute



Dhaka Mohila Polytechnic Institute



Jhenaidah Polytechnic Institute



Dinajpur Polytechnic Institute



Feni Computer Institute



Gopalganj Polytechnic Institute



Habiganj Polytechnic Institute



Aptouch Polytechnic Institute



Faridpur Polytechnic Institute



Jessore Polytechnic Institute



Lakshmipur Polytechnic Institute



Kishoreganj Polytechnic Institute



Magura Polytechnic Institute



Moulvibazar Polytechnic Institute



Munshiganj Polytechnic Institute



Naogaon Polytechnic Institute



Narsingdi Polytechnic Institute



Mymensingh Polytechnic Institute



Pabna Polytechnic Institute



NSRTC





Patuakhali Polytechnic Institute



Shariatpur Polytechnic Institute



Satkhira Polytechnic Institute



Sirajganj Polytechnic Institute



Tangail Polytechnic Institute



Sylhet Polytechnic Institute



Thakurgaon Polytechnic Institute



Sherpur Polytechnic Institute



Puthia Polytechnic Institute



CCN Polytechnic Institute



BIIT Bogra



Exalt Institute of Technology



Ideal Institute of Science & Technology



National Polytechnic Institute



Institute of Information Technology



Pioneer Insurance Co. Ltd.



Global Insurance Ltd.



Padma Islami Life Insurance Ltd.



Achar Bazar



N S Construction



Progoti Systems Ltd.



CONCLUSION

On the whole Bangladesh IT Institute is not only a service provider firm but also a family of highly educated and skilled trains, expert & efficient executives and organized management. BITI has a structured platform developed based on the feedback and observation of its clients through these 11 (Eleven) years. BITI has the capacity of adopting new changes and upgraded technologies for the fulfillment of the project.

Thank You

